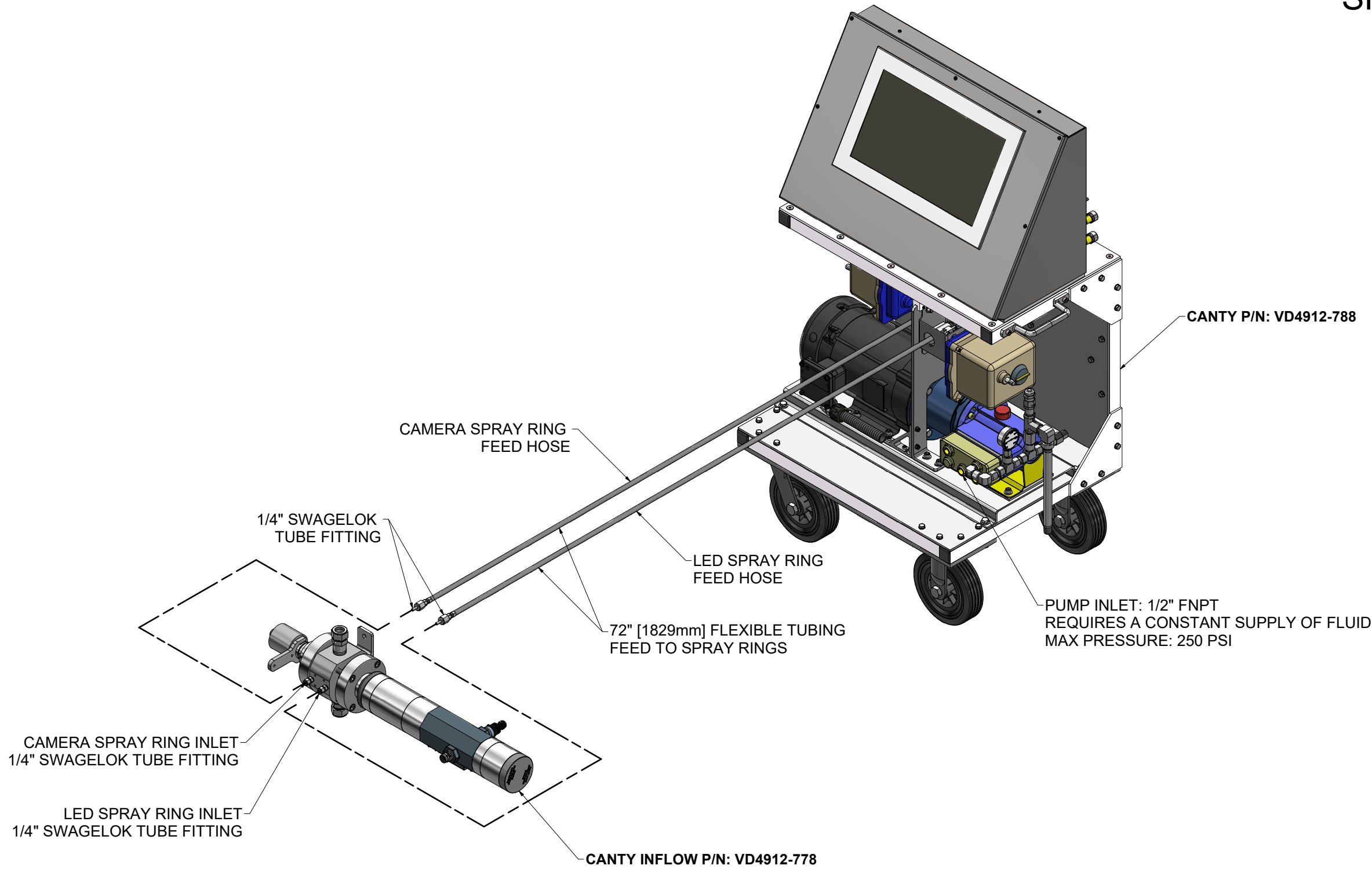


NOTICE THIS DRAWING IS THE PROPERTY OF J.M. CANTY AND MUST BE RETURNED WITHOUT REPRODUCTION OR DUPLICATION, AT ANY TIME UPON REQUEST, BUT IN ANY EVENT AS SOON AS IT HAS SERVED THE PURPOSE FOR WHICH IT WAS FURNISHED. WHILE IN THE POSSESSION OF THE RECIPIENT, IT MUST BE PROPERLY SAFEGUARDED AGAINST DISCLOSURE TO ANYONE EXCEPT THOSE EMPLOYEES WHO REQUIRE IT FOR WORK OR JOB. THE RECIPIENT MUST KEEP CONFIDENTIAL AND REQUIRE HIS (HER) EMPLOYEES TO KEEP CONFIDENTIAL THE INFORMATION CONTAINED HERE ON.		IMPORTANT FOR THE REQUIRED MANUFACTURING SPECIFICATIONS SEE DOCUMENT #A4955 NOTE: FAILURE TO RECEIVE DOCUMENT DOES NOT WAIVE VENDOR RESPONSIBILITY		DRAWN BY DEJ APPROVAL DEJ ENGINEERING ANALYSIS CURRENT MFG. APPROVAL PENDING QUALITY CONTROL VJS	DATE 28-May-19 DATE 28-May-19 DATE DATE DATE	J.M. CANTY INC. 6100 DONNER RD. BUFFALO, N.Y. 14094 U.S.A. CANTY WWW.JMCANTY.COM	J.M. CANTY INTL. LTD. BALLYCOOLIN BUS. PK. BLANCHARDSTOWN DUBLIN 15, IRELAND
TITLE LAYOUT DWG., CANTY P/N: VD4912-788 (INFLOW CTRL. CART W/ MONITOR) & VD4912-778 (INFLOW)							
REVISION 0		FILE NAME VD11919-1090		SCALE AS NOTED		SIZE D	SHEET 1 OF 4



CANTY P/N: VD4912-788

PUMP INLET: 1/2" FNPT
REQUIRES A CONSTANT SUPPLY OF FLUID
MAX PRESSURE: 250 PSI

CAMERA SPRAY RING
FEED HOSE

1/4" SWAGELOK
TUBE FITTING

LED SPRAY RING
FEED HOSE

72" [1829mm] FLEXIBLE TUBING
FEED TO SPRAY RINGS

CAMERA SPRAY RING INLET
1/4" SWAGELOK TUBE FITTING

LED SPRAY RING INLET
1/4" SWAGELOK TUBE FITTING


CANTY INFLOW P/N: VD4912-778

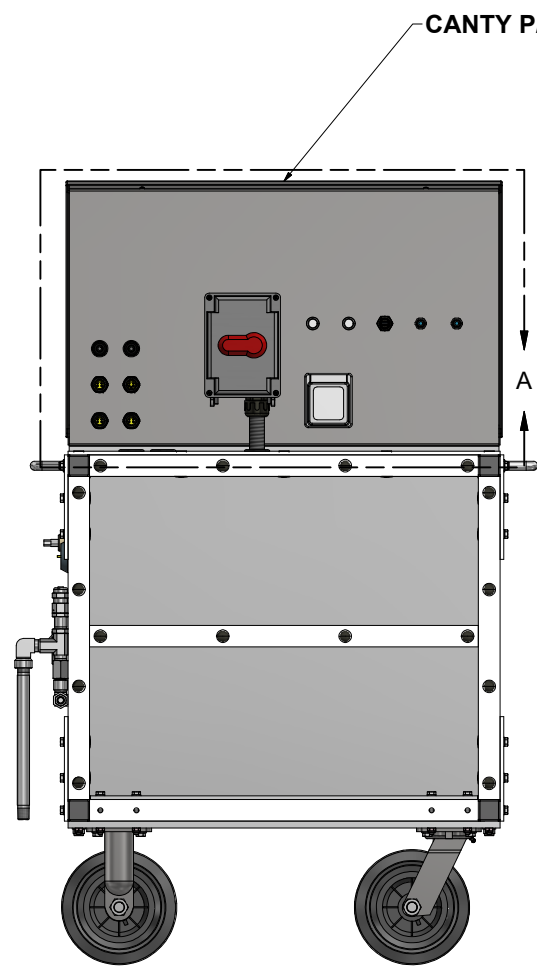
NOTICE
THIS DRAWING IS THE PROPERTY OF J.M. CANTY AND MUST BE RETURNED WITHOUT REPRODUCTION OR DUPLICATION, AT ANY TIME UPON REQUEST, BUT IN ANY EVENT AS SOON AS IT HAS SERVED THE PURPOSE FOR WHICH IT WAS FURNISHED. WHILE IN THE POSSESSION OF THE RECIPIENT, IT MUST BE PROPERLY SAFEGUARDED AGAINST DISCLOSURE TO ANYONE EXCEPT THOSE EMPLOYEES WHO REQUIRE IT FOR WORK OR JOB. THE RECIPIENT MUST KEEP CONFIDENTIAL AND REQUIRE HIS (HER) EMPLOYEES TO KEEP CONFIDENTIAL THE INFORMATION CONTAINED HERE ON.

IMPORTANT
FOR THE REQUIRED MANUFACTURING SPECIFICATIONS SEE DOCUMENT #A4955

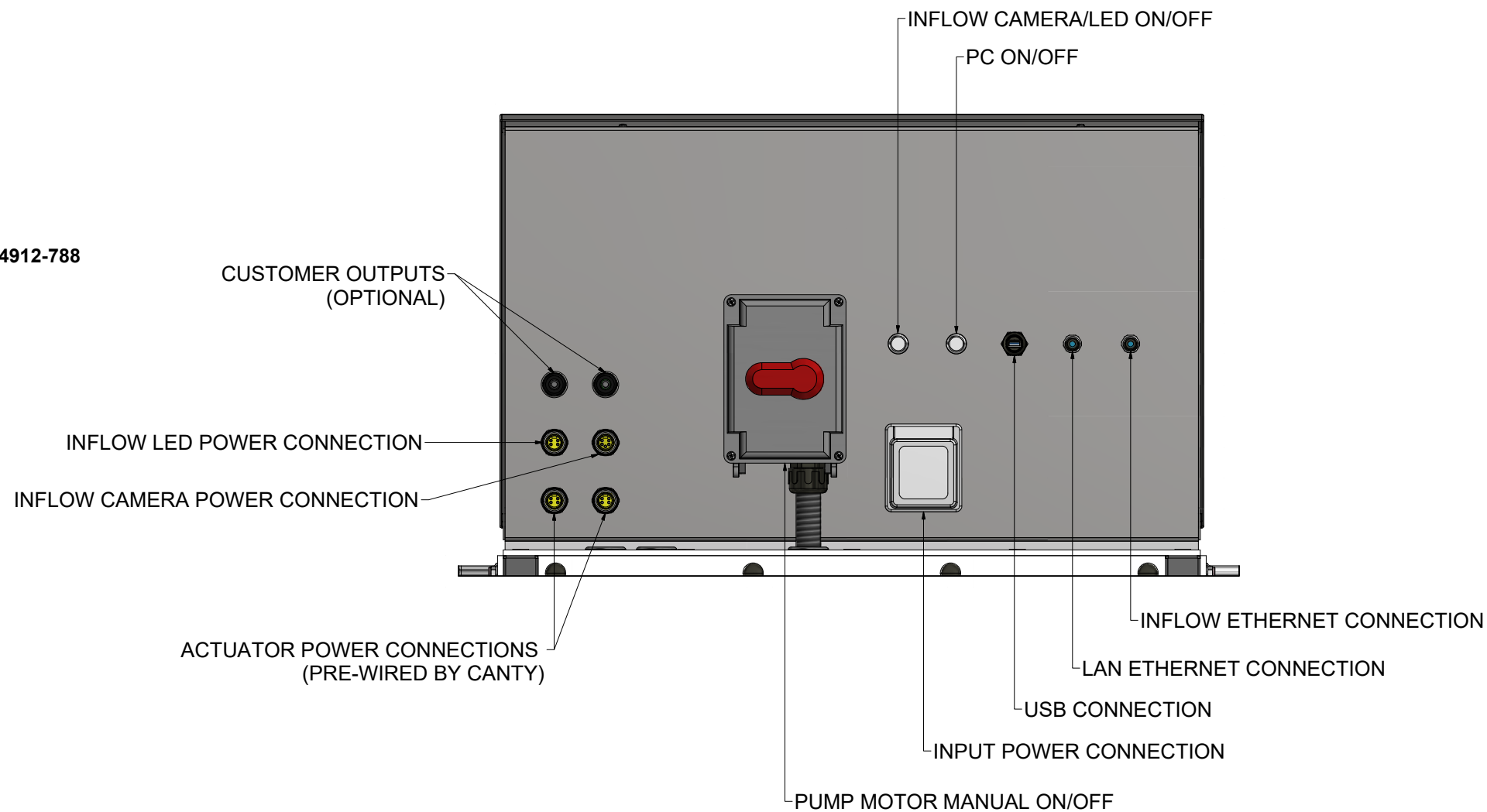
NOTE: FAILURE TO RECEIVE DOCUMENT DOES NOT WAIVE VENDOR RESPONSIBILITY

DRAWN BY DEJ	DATE 28-May-19
APPROVAL DEJ	DATE 28-May-19
ENGINEERING ANALYSIS CURRENT	DATE
MFG. APPROVAL PENDING	DATE
QUALITY CONTROL VJS	DATE

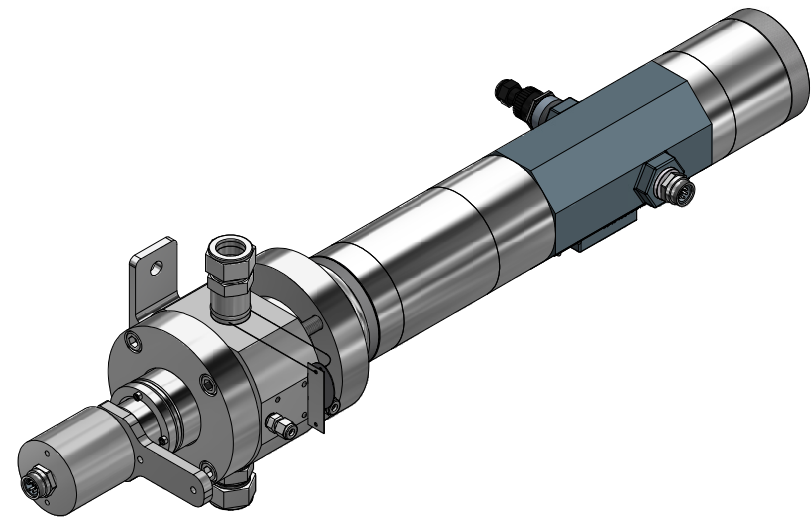
J.M. CANTY INC. 6100 DONNER RD. BUFFALO, N.Y. 14094 U.S.A.		 WWW.JMCANTY.COM	J.M. CANTY INTL. LTD. BALLYCOOLIN BUS. PK. BLANCHARDSTOWN DUBLIN 15, IRELAND
TITLE LAYOUT DWG., CANTY P/N: VD4912-788 (INFLOW CTRL. CART W/ MONITOR) & VD4912-778 (INFLOW)			
REVISION 0	FILE NAME VD11919-1090	SCALE AS NOTED SIZE D SHEET 2 OF 4	



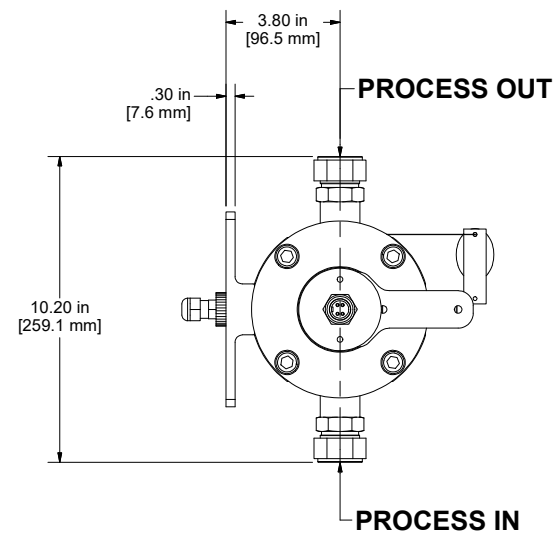
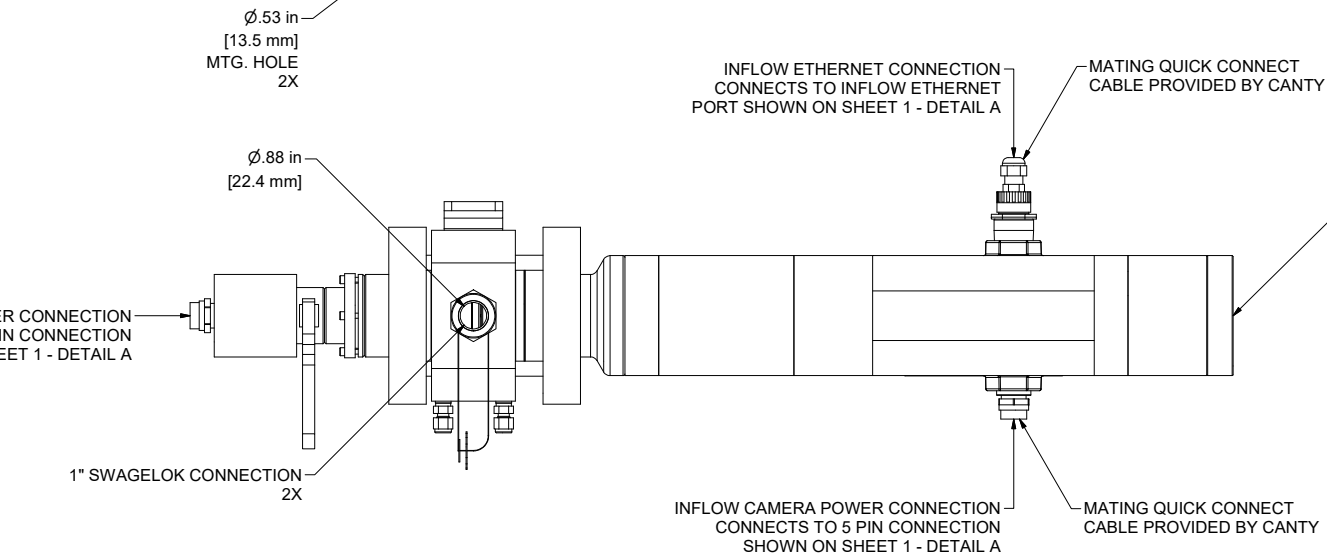
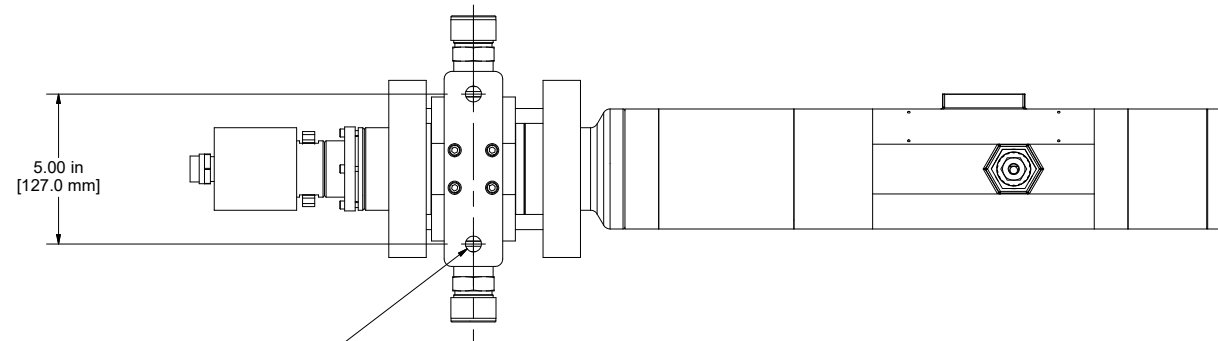
CANTY P/N: VD4912-788



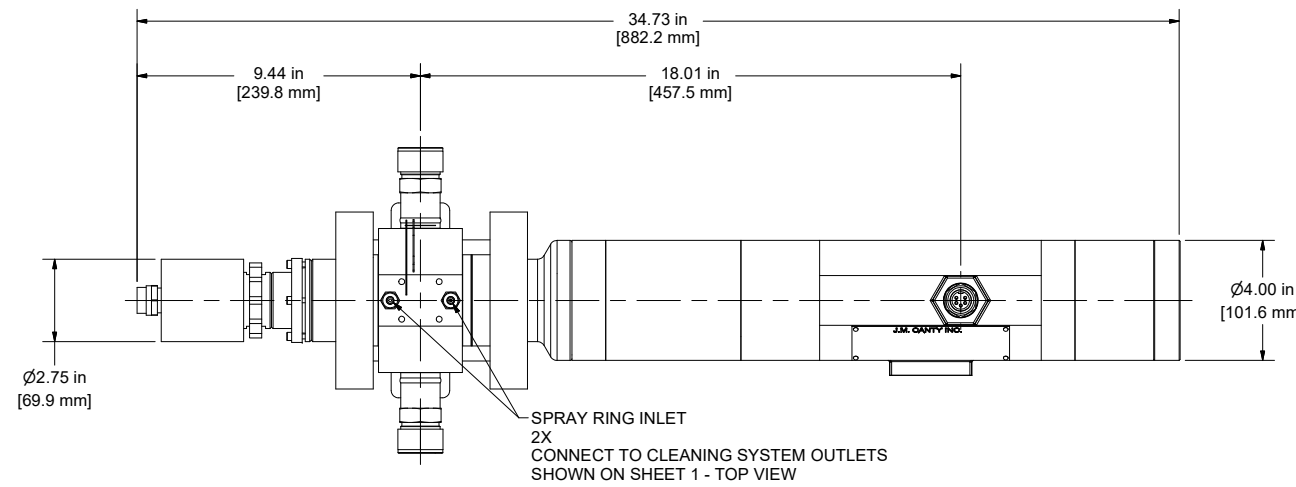
<p>NOTICE</p> <p>THIS DRAWING IS THE PROPERTY OF J.M. CANTY AND MUST BE RETURNED WITHOUT REPRODUCTION OR DUPLICATION, AT ANY TIME UPON REQUEST, BUT IN ANY EVENT AS SOON AS IT HAS SERVED THE PURPOSE FOR WHICH IT WAS FURNISHED. WHILE IN THE POSSESSION OF THE RECIPIENT, IT MUST BE PROPERLY SAFEGUARDED AGAINST DISCLOSURE TO ANYONE EXCEPT THOSE EMPLOYEES WHO REQUIRE IT FOR WORK OR JOB. THE RECIPIENT MUST KEEP CONFIDENTIAL AND REQUIRE HIS (HER) EMPLOYEES TO KEEP CONFIDENTIAL THE INFORMATION CONTAINED HERE ON.</p>	<p>IMPORTANT</p> <p>FOR THE REQUIRED MANUFACTURING SPECIFICATIONS SEE DOCUMENT #A4955</p> <p>NOTE: FAILURE TO RECEIVE DOCUMENT DOES NOT WAIVE VENDOR RESPONSIBILITY</p>	<p>DRAWN BY</p> <p>DEJ</p>	<p>DATE</p> <p>28-May-19</p>	<p>J.M. CANTY INC. 6100 DONNER RD. BUFFALO, N.Y. 14094 U.S.A.</p>	<p>CANTY</p> <p>WWW.JMCANTY.COM</p>	<p>J.M. CANTY INTL. LTD. BALLYCOOLIN BUS. PK. BLANCHARDSTOWN DUBLIN 15, IRELAND</p>	
		<p>APPROVAL</p> <p>DEJ</p>	<p>DATE</p> <p>28-May-19</p>				
		<p>ENGINEERING ANALYSIS</p> <p>CURRENT</p>	<p>DATE</p>				
		<p>MFG. APPROVAL</p> <p>PENDING</p>	<p>DATE</p>				
<p>QUALITY CONTROL</p> <p>VJS</p>	<p>DATE</p>	<p>TITLE</p> <p>LAYOUT DWG., CANTY P/N: VD4912-788 (INFLOW CTRL. CART W/ MONITOR) & VD4912-778 (INFLOW)</p>	<p>REVISION</p> <p>0</p>	<p>FILE NAME</p> <p>VD11919-1090</p>	<p>SCALE AS NOTED</p>	<p>SIZE D</p>	<p>SHEET 3 OF 4</p>



ISOMETRIC VIEW
SCALE .3125 : 1



LEFT VIEW
SCALE .3125 : 1



FRONT VIEW
SCALE .3125 : 1

NOTES:

1. UNIT HYDROTESTED TO 225 PSI [16 BAR] AT AMBIENT TEMPERATURE. UNIT RATED TO 150 PSI [10 BAR] @ 200°F [93°C].
2. INFLOW IS RATED FOR NEMA4 / IP66
3. APPROXIMATE SYSTEM WEIGHT OF EQUIPMENT IN THE PROCESS LINE: 60 LB. [28 KG.].
4. DIRECTION OF FLOW THROUGH INFLOW ANALYSER FLOW CELL SHOULD BE AS SHOWN TO ENSURE FLOW CELL CAVITY IS FULL DURING PROCESS FLOW, ENABLING ACCURATE MEASUREMENT TO TAKE PLACE
5. ALL DIMENSIONS LISTED ARE THEORETICAL AND MAY VARY SLIGHTLY DUE TO MANUFACTURING TOLERANCES AND ASSEMBLY POSITION OF ADJUSTABLE PARTS.

NOTICE
THIS DRAWING IS THE PROPERTY OF J.M. CANTY AND MUST BE RETURNED WITHOUT REPRODUCTION OR DUPLICATION, AT ANY TIME UPON REQUEST, BUT IN ANY EVENT AS SOON AS IT HAS SERVED THE PURPOSE FOR WHICH IT WAS FURNISHED. WHILE IN THE POSSESSION OF THE RECIPIENT, IT MUST BE PROPERLY SAFEGUARDED AGAINST DISCLOSURE TO ANYONE EXCEPT THOSE EMPLOYEES WHO REQUIRE IT FOR WORK OR JOB. THE RECIPIENT MUST KEEP CONFIDENTIAL AND REQUIRE HIS (HER) EMPLOYEES TO KEEP CONFIDENTIAL THE INFORMATION CONTAINED HERE ON.

IMPORTANT
FOR THE REQUIRED MANUFACTURING SPECIFICATIONS SEE DOCUMENT #A4955

NOTE: FAILURE TO RECEIVE DOCUMENT DOES NOT WAIVE VENDOR RESPONSIBILITY

DRAWN BY DEJ	DATE 28-May-19
APPROVAL DEJ	DATE 28-May-19
ENGINEERING ANALYSIS CURRENT	DATE
MFG. APPROVAL PENDING	DATE
QUALITY CONTROL VJS	DATE

J.M. CANTY INC. 6100 DONNER RD. BUFFALO, N.Y. 14094 U.S.A.	CANTY WWW.JMCANTY.COM	J.M. CANTY INTL. LTD. BALLYCOOLIN BUS. PK. BLANCHARDSTOWN DUBLIN 15, IRELAND
TITLE LAYOUT DWG., CANTY P/N: VD4912-788 (INFLOW CTRL. CART W/ MONITOR) & VD4912-778 (INFLOW)		
REVISION 0	FILE NAME VD11919-1090	
SCALE AS NOTED	SIZE D	SHEET 4 OF 4